

# 0146108 Wireless Local Loop Antennas - Patch Antennas - HPY4-1700 -

## 仕様

### ◆Electrical Specifications

Item	Specification
Frequency Range	1710~1880MHz
Gain	12dBi
Front To Back Ratio	15dB
3dB Beam Width	35°±5°(H-Plane, E-Plane)
V.S.W.R(Max.)	Less than 1.5
Impedance	50 Ω
Polarization	Vertical
Power Input(max.)	50W

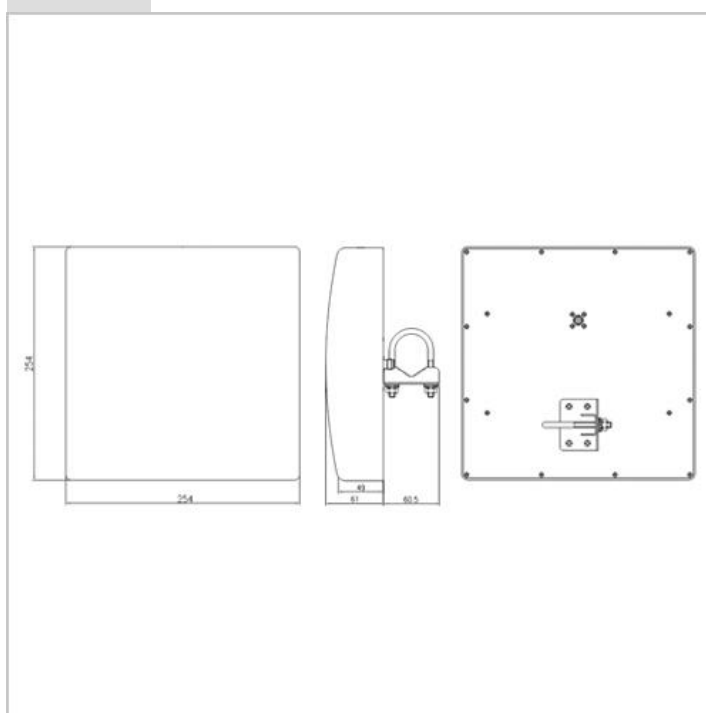
### ◆Mechanical

Item	Specification
Dimensions	254mm×254mm×61mm Ant. Only
Weight	1.2Kg
Connector Type	TNC Female
Mount type	Pole Mount (Dia. 20~38mm)
Operating Temperature	-30° ~ +60° C

## 製品写真



## 寸法図



## 0146109 Wireless Local Loop Antennas - Patch Antennas - HPY4-1900 -

### 仕様

#### ◆Electrical Specifications

Item	Specification
Frequency Range	1850-1990MHz
Gain	12dBi
Front To Back Ratio	15dB
3dB BeamWidth	35°±5°(H-Plane, E-Plane)
V.S.W.R(Max.)	Less than 1.5
Impedance	50 Ω
Polarization	Vertical
Power Input(max.)	50W

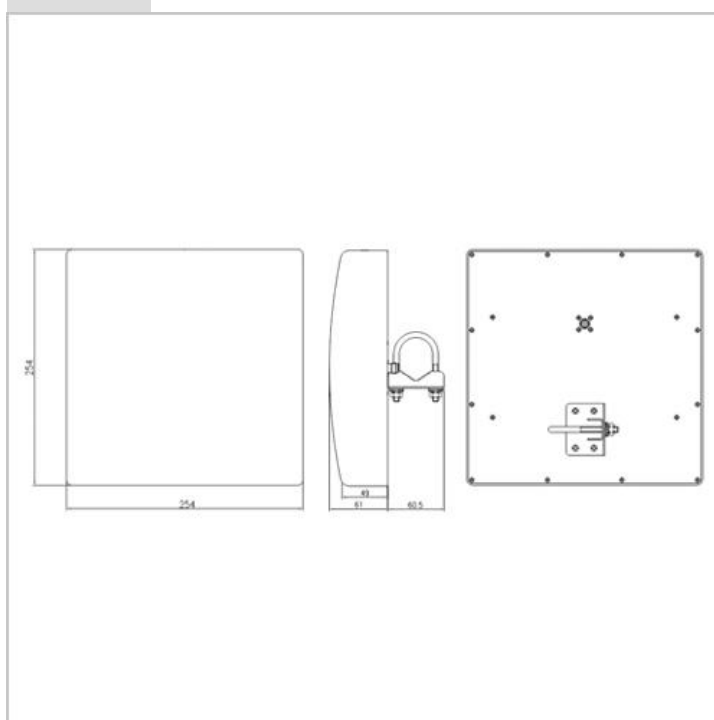
#### ◆Mechanical

Item	Specification
Dimensions	254mm×254mm×61mm Ant. Only
Weight	1.2Kg
Connector Type	TNC Female
Mount type	Pole Mount (Dia. 20~38mm)
Operating Temperature	-30° ~ +60° C

### 製品写真



### 寸法図



# 0146110 Wireless Local Loop Antennas - Patch Antennas - HSP-800 -

## 仕様

### ◆Electrical Specifications

ITEM	SPECIFICATIONS
Antenna Type	Slot Patch
Frequency Range	824 ~ 894 MHz
V.S.WR	Less than 1.5
Gain	9 dBi (Minimum)
Radiation Pattern	Directional
Half Power Beam Width	Azimuth : $62 \pm 3^\circ$ Elevation : $62 \pm 3^\circ$
Nominal Impedance	50 $\Omega$
Front to Back Ratio	15dB
Polarization	Vertical

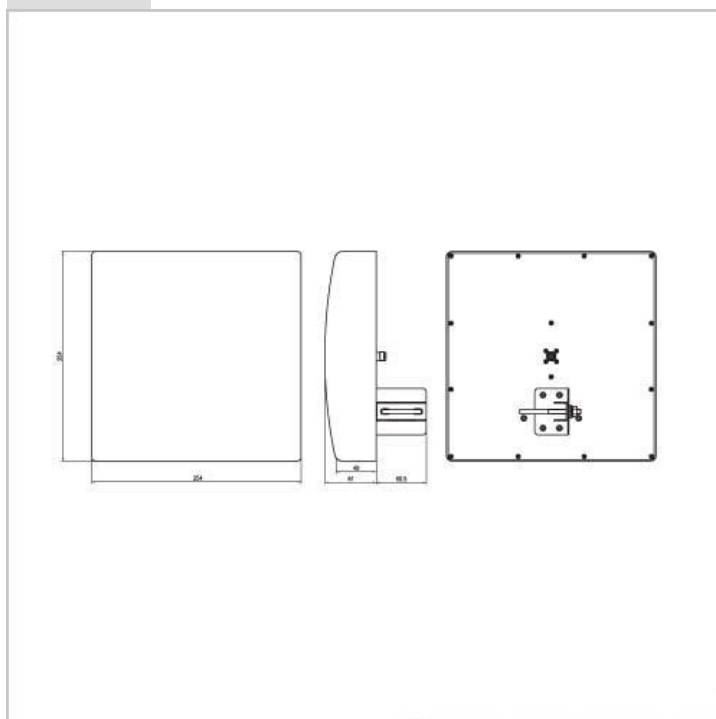
### ◆Mechanical

ITEM	SPECIFICATIONS	REMARK
Dimension(WxHxD)	254 mm x 254 mm x 61mm	Without Bracket
Housing Material	UV ABS	Gray Color
Connector	TNC-Type Female	Ni-Plating
Operation Temperature	-30 ~ +60 °C	
Mount Type	Pipe mount	Ø20~35 mm
Weight	1 kg	With Bracket

## 製品写真



## 寸法図



# 0146111 Wireless Local Loop Antennas - Patch Antennas - HSP-1800 -

## 仕様

### ◆Electrical Specifications

Item	Specification
Frequency Range	1710-1990 MHz
Gain	7.5 dBi
Front To Back Ratio	12 dB
3dB Beam Width	Azimuth : 70° Elevation : 78°
V.S.W.R(Max.)	Less than 1.5
Impedance	50 Ω
Polarization	Vertical
Power Input(max.)	50 W

### ◆Mechanical

Item	Specification
Dimensions (W×H×D)	90 × 127 × 68 mm
Weight	160 g(only ANT.)
	240 g(With individual box)
Connector	SMA Female R/A
Mount type	Wall mount
Articulation angle	-60° ~ +60°

## 製品写真



## 寸法図

