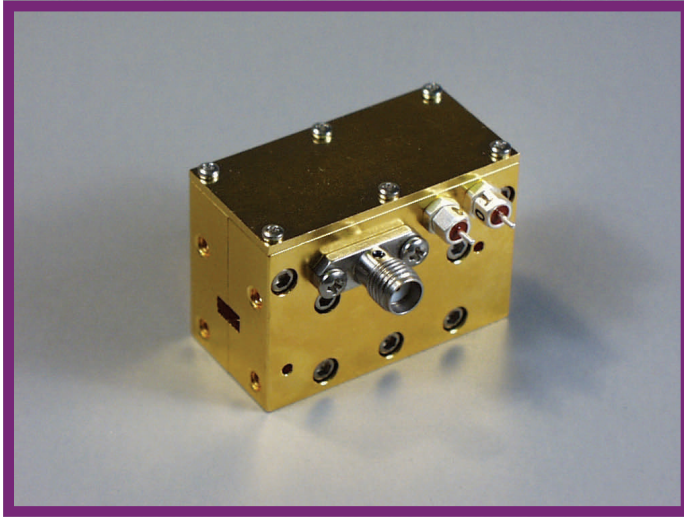


915 Series Full Bandwidth Pin Diode Switches



Features

- 18.0 to 110.0 GHz
- Various On/Off Ratios Available
- 10 GHz Bandwidths from 75 to 110 GHz
- Full Waveguide Band Coverage up to 75 GHz
- Broadband SPST Diode Switches with Integral TTL Devices

Description 915 Series Switches

Mi-Wave's 915 series SPST PIN diode switches are full waveguide band units with integral TTL drivers. Full band performance is available in K-band thru V-band and 10 GHz bandwidths are available in E-band and W-band. Fast switching and high isolation options are available and these assemblies can be tailored to customer specifications.

Applications

These switches can be used in pulse shaping, amplitude modulation, and receiver protection applications.

Operating Specifications

Control Input	TTL
DC Power (standard unit)	+5/-12 Vdc +10/-2 mA
DC Power (fast switching)	+5/-20 Vdc +10/-2 mA
CW Power (Max.)	0.2 Watt
Operating Temperature	0 to +60° C
Storage Temperature	-55° C to +125° C
VSWR	1.8 Typical (Low Loss) 3.5 Typical (Isolation)

Ordering Information

915	/	Specify Logic/Driver Option (-01 Standard)												
		<table border="1"> <thead> <tr> <th>Standard</th> <th>High Isolation</th> <th>Loss State for Logic "1"</th> </tr> </thead> <tbody> <tr> <td>-01</td> <td>-03</td> <td>Low Loss</td> </tr> <tr> <td>-02</td> <td>-04</td> <td>Isolation</td> </tr> <tr> <td></td> <td>-05</td> <td>No Driver</td> </tr> </tbody> </table>	Standard	High Isolation	Loss State for Logic "1"	-01	-03	Low Loss	-02	-04	Isolation		-05	No Driver
Standard	High Isolation	Loss State for Logic "1"												
-01	-03	Low Loss												
-02	-04	Isolation												
	-05	No Driver												
		Specify RF Band Designator (K, A, B, U, V, E, W)												

Please specify center frequency at time of order.

Mi-Wave

Millimeter Wave Products Inc.

www.miww.com

2200 Tall Pines Drive, Suite 100

Largo, FL 33771

Tel. (727) 536-0033 Fax. (727) 536-0012

E: sales@miww.com