

700 Series

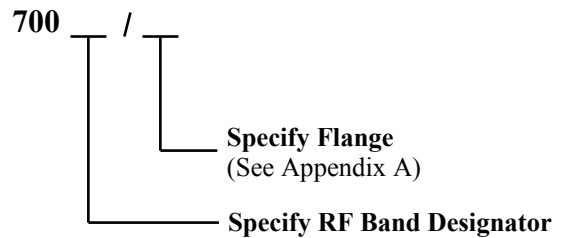
Precision Drill Jigs



Features

- Hardened Steel Provides Continued Accurate Drilling Alignment
- Tapered Locating Tab Uses Waveguide Surfaces as Location Reference to Ensure a Perfect Mate

Ordering Information



Description

700 Series Drill Jigs

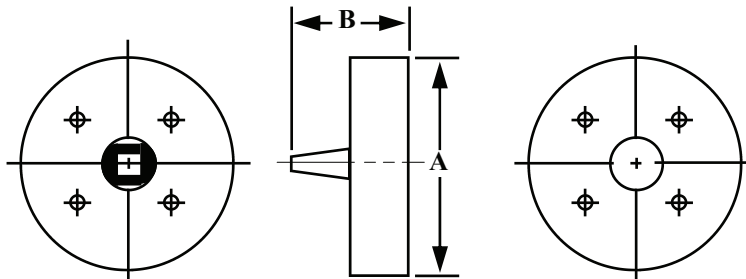
Each of *Mi-Wave's* 700 series drill jigs consists of a solid steel block with accurately positioned drill holes and a tapered locating tab that will locate the drill holes in precise relation to the internal waveguide surfaces. Hardened steel minimizes wear to ensure drilling accuracy.

Applications

The 700 series precision drill jigs are designed to facilitate accurate fabrication of flanged waveguide sections for standard waveguide sizes from 26.5 to 220 GHz. These jigs are used to locate alignment pins, mating pin holes, and connecting screw holes in the waveguide flanges. By using the interior waveguide surface as the primary location reference, they ensure accurate waveguide alignment at each flanged junction with low loss and

Dimensional Specifications

Model Number	A		B	
	in	mm	in	mm
700A	1.38	35.05	0.62	15.75
700B	1.38	35.05	0.62	15.75
700U	1.38	35.05	0.62	15.75
700V	1.00	25.4	0.62	15.75
700E	1.00	25.4	0.62	15.75
700W	1.00	25.4	0.62	15.75
700F	0.75	19.05	0.51	12.95
700D	0.75	19.05	0.51	12.95
700G	0.75	19.05	0.51	12.95



Mi-Wave

Millimeter Wave Products Inc.

www.miww.com

2200 Tall Pines Drive, Suite 100

Largo, FL 33771

Tel. (727) 536-0033 Fax. (727) 536-0012

E: sales@miww.com