

535 Series Two-Position Solenoid Switches



Features

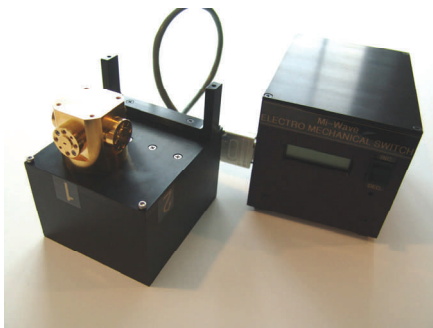
- Low Loss
- Low VSWR
- Accurate Positioning
- High Isolation Between Ports
- GPIB IEEE-488 Control Available

Description 535 Series Solenoid Switches

Each of *Mi-Wave's* 535 series waveguide switches consists of a waveguide switch selection similar to the 530 series switch and a rotary solenoid stepping motor encased in a machined housing.

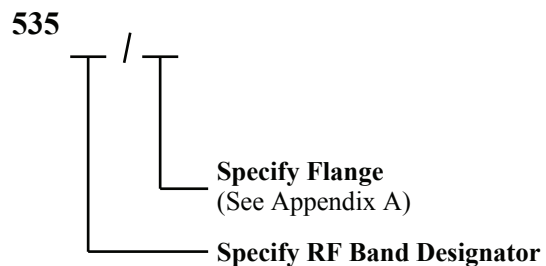
Applications

The 535 series solenoid switches are used in applications that require remote-controlled or timed transmission line switching. They are particularly useful in operational systems and test setups where they supply a variety of switching combinations.



GPIB Controlled Switch 4 port 4 position

Ordering Information



Mi-Wave

Millimeter Wave Products Inc.

www.miwv.com

2200 Tall Pines Drive, Suite 100

Largo, FL 33771

Tel. (727) 536-0033 Fax. (727) 536-0012

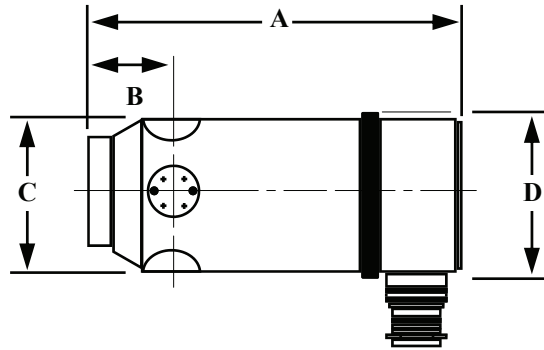
E: sales@miwv.com

535 Series Two Position Solenoid Switches

Technical Specifications

Model Number	535A	535B	535U	535V	535E	535W
Frequency Band (GHz)	26.5-40.0	33.0-50.0	40.0-60.0	50.0-75.0	60.0-90.0	75.0-110.0
Isolation (dB) Min.	50	50	50	40	40	40
Insertion Loss (dB) Max.	0.3	0.3	0.3	0.3	0.4	0.5
VSWR Max.	1.15	1.15	1.15	1.15	1.15	1.15
Average Switching Speed (Seconds)	0.5	0.5	0.5	0.5	0.5	0.5

Please Check with MI-Wave for current outline drawings.



Dimensional Specifications

Model No.	A		B		C		D	
	in	mm	in	mm	in	mm	in	mm
535A	5.21	132.0	1.28	32.5	2.61	66.3	2.73	69.3
535B	5.21	132.0	1.28	32.5	2.61	66.3	2.73	69.3
535U	5.21	132.0	1.28	32.5	2.61	66.3	2.73	69.3
535V	5.41	137.0	1.14	28.9	1.92	48.8	2.50	63.5
535E	5.41	137.0	1.14	28.9	1.92	48.8	2.50	63.5
535W	5.41	137.0	1.14	28.9	1.92	48.8	2.50	63.5

Mi-Wave

Millimeter Wave Products, Inc.

www.miww.com

Tel. (727) 536-0033 Fax. (727) 536-0012

E: sales@miww.com