

# 523 Series Micrometer-Driven Calibrated Attenuators



## Features

- High Resolution
- Micrometer Readout
- Differential Screw Drive
- Anti-Backlash Operation
- Excellent Mechanical Stability
- Calibration Accuracy: 0.2 dB or 2%
- Calibration Curve Provided at Specified Frequency

## Description 523 Series Attenuators

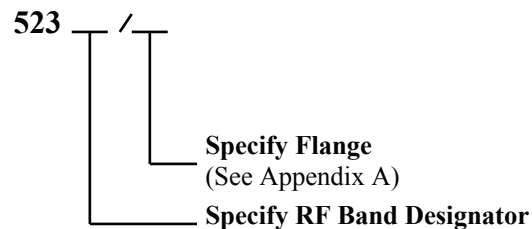
**Mi-Wave's** 523 series micrometer-driven calibrated attenuators are compact precision attenuating devices available in standard waveguide sizes from 90.0 to 220 GHz.

Each attenuator is calibrated at the frequency specified at the time of order, and a curve of attenuation vs. dial-reading is included with every unit. Calibration curves at other frequencies are also available.

## Applications

The 523 series micrometer-driven calibrated attenuators are designed for laboratory applications in standard waveguide bands from 90.0 to 220.0 GHz. The drive mechanism is designed for the high resolution of vane insertion vs. attenuation characteristics that is required for the small waveguide dimensions associated with the higher millimeter wave frequencies. These attenuators are very useful for insertion loss measurements, and a wide variety of other attenuation and power level determinations.

## Ordering Information



Please specify center frequency at time of order.

## **Mi-Wave**

Millimeter Wave Products Inc.

[www.miwv.com](http://www.miwv.com)

2200 Tall Pines Drive, Suite 100

Largo, FL 33771

Tel. (727) 536-0033 Fax. (727) 536-0012

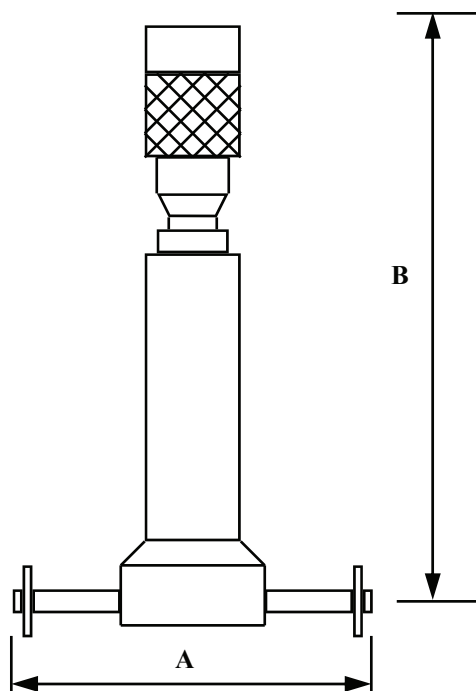
E: [sales@miwv.com](mailto:sales@miwv.com)

# 523 Series Micrometer-Driven Calibrated Attenuators

## Technical Specifications

<b>Model Number</b>	<b>523F</b>	<b>523D</b>	<b>523G<sup>1</sup></b>
<b>Frequency Band (GHz)</b>	90.0-140.0	110.0-170.0	140.0-220.0
<b>Calibration Accuracy</b>	0.2 dB - 2%	0.2 dB - 2%	0.2 dB - 2%
<b>Attenuation Range</b>	0 dB - 25 dB	0 dB - 25 dB	0 dB - 25 dB
<b>VSWR</b>	1.25	1.25	1.25
<b>Insertion Loss</b>	0.5 dB	0.6 dB	0.7 dB
<b>Average (W) Avg.</b>	0.3	0.2	0.1
<b>Weight (oz)</b>	5.5	5.5	5.5

1. Full attenuation range may not be available for all G-band frequencies.



## Dimensional Specifications

<b>Model No.</b>	<b>A</b>		<b>B<sup>1</sup></b>	
	<b>in</b>	<b>mm</b>	<b>in</b>	<b>mm</b>
<b>523F</b>	<b>2.00</b>	<b>50.8</b>	<b>3.65</b>	<b>92.7</b>
<b>523D</b>	<b>2.00</b>	<b>50.8</b>	<b>3.65</b>	<b>92.7</b>
<b>523G</b>	<b>2.00</b>	<b>50.8</b>	<b>3.65</b>	<b>92.7</b>

1. 4.15 in (105.4 mm) maximum dimension with micrometer fully extended.

***Mi-Wave***

Millimeter Wave Products, Inc.

www.miwv.com

Tel. (727) 536-0033 Fax. (727) 536-0012

E: sales@miwv.com