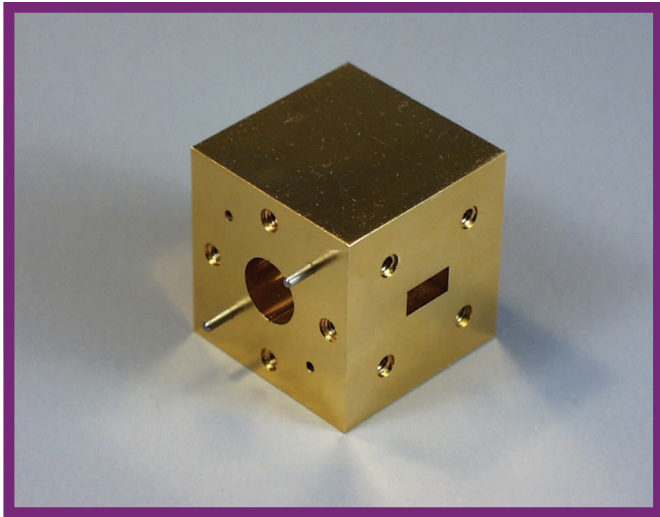


281 Series

Orthomode Transducers



Features

- VSWR < 1.2
- Isolation > 30 dB in Linear Mode
- Higher Frequency Units will be Quoted on Request
- Available from 18.0 to 110 GHz with 3% or Greater Bandwidth

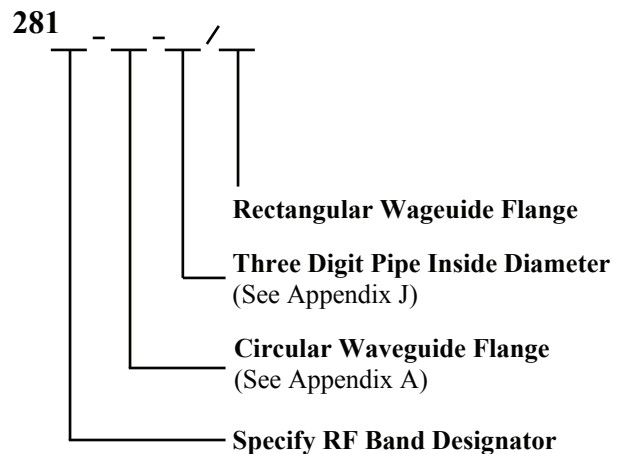
Description 281 Series Transducers

Mi-Wave's 281 series orthomode transducer couples two orthogonal linearly polarized signals simultaneously while providing polarization isolation between transmit and receive.

Applications

The 281 series used primarily in conjunction with the antenna product line, which can be combined with cassegrain, horn lens, or circular horn antennas to provide dual linear orthogonal/dual circular orthogonal polarization.

Ordering Information



Mi-Wave

Millimeter Wave Products Inc.

www.miwv.com

2200 Tall Pines Drive, Suite 100

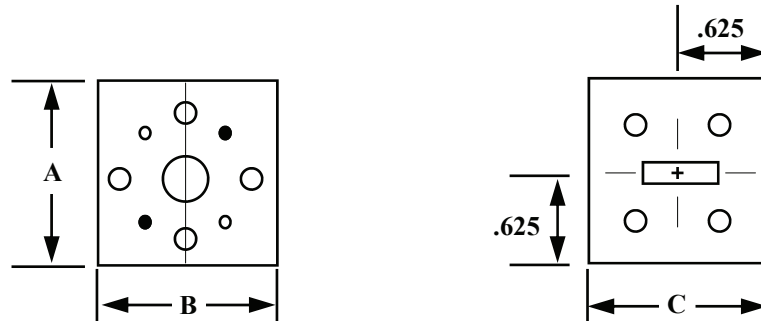
Largo, FL 33771

Tel. (727) 536-0033 Fax. (727) 536-0012

E: sales@miwv.com

281 Series

Orthomode Transducers



Specifications

Model Number	Frequency Band (GHz)	% Bandwidth	A		B		C	
			in	mm	in	mm	in	mm
281K	18.0-26.5	4 %	1.25	31.8	1.25	31.8	1.25	31.8
281A	26.5-40.0	4 %	1.25	31.8	1.25	31.8	1.25	31.8
281B	30.0-50.0	4 %	1.25	31.8	1.25	31.8	1.25	31.8
281U	40.0-60.0	3 %	1.25	31.8	1.25	31.8	1.25	31.8
281V	50.0-75.0	3 %	1.25	31.8	1.25	31.8	1.25	31.8
281E	60.0-90.0	3 %	1.25	31.8	1.25	31.8	1.25	31.8
281W	75.0-110.0	3 %	1.25	31.8	1.25	31.8	1.25	31.8
281F	90.0-140.0	3 %	1.25	31.8	1.25	31.8	1.25	31.8

1. Please specify circular waveguide size per appendix, include both ends.
2. For rectangular straight through, please add a Model No. 284-XXX at time of order.

Mi-Wave

Millimeter Wave Products, Inc.

www.miww.com

Tel. (727) 536-0033 Fax. (727) 536-0012

E: sales@miww.com