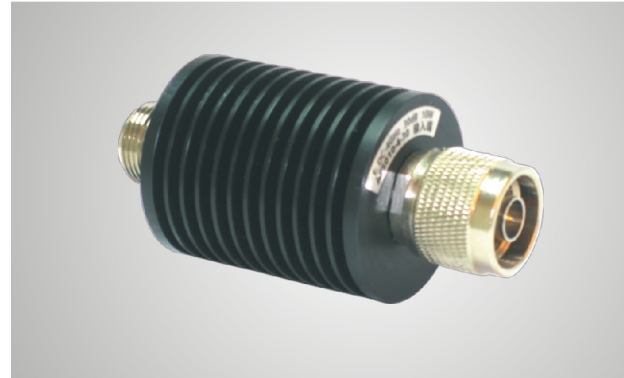


ATS Series Attenuator



ATS2 2W

- Average Power: 2W (>10%)
- Peak Power 5 μ S: 0.25kW
- Frequency/attenuation value/ accuracy/SWR/Connector
- Shape: roundness
- Dimensions: (mm) ϕ 18.5 \times 82
- Dimension error: \pm 5%
- Weight: 135g



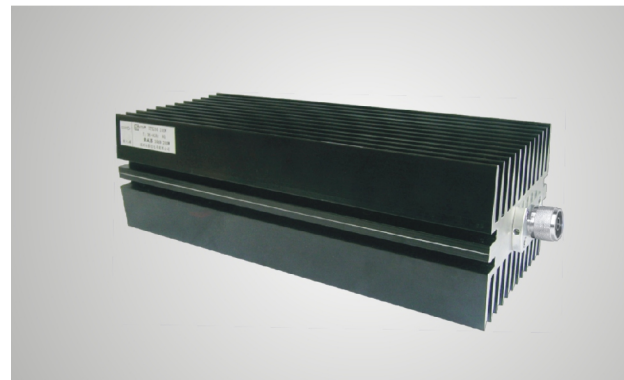
ATS10 10W

- Average Power: 10W (>10%)
- Peak Power 5 μ S: 1kW
- Frequency/attenuation value/accuracy/SWR/Connector
- Shape: roundness
- Dimensions: (mm) ϕ 38 \times 82
- Dimension error: \pm 5%
- Weight: 150g



ATS50 50W

- Average Power: 50W (>10%)
- Peak Power 5 μ S: 5kW
- Frequency/attenuation value/accuracy/SWR/Connector
- Shape: Square
- Dimensions: (mm) 172 \times 96 \times 87
- Dimension error: \pm 5%
- Weight: 1.25kg



ATS200 200W

- Average Power: 200W (>10%)
- Peak Power 5 μ S: 10kW
- Connector: N Type, 7/16 Type
- Shape: Square
- Dimensions: (mm) 60 \times 100 \times 270
- Weight: 2.5kg

VCO / YTO / Programmable Attenuator



Model	Min	Typ	Max
Frequency Range	1350	/	2400
Output Power	/	+10	/
Tune Voltage	3	/	24
Phasic Noiset	10kHz	-96	/
Input Voltage	/	15	/
Input Current	/	/	58



ATPS Programmable Attenuator

- Attenuation step: 5dB
- Power: 1W
- Control voltage: 24V
- Impedance: 50 Ω
- Connector type: SMA
- Dimension: 130 \times 50 \times 25
- Dimension error: \pm 5%
- Weight: 275g



Model	AT86201	AT86202	AT86203
Frequency Range	2-4	3-7	4-7
Output Power	15	20	20
Harmonic component	-12	-12	-12
Parasitic output	-60	-60	-60
Single-phase noise	-115	-115	-115
Hysteresis	5	5	5
Tune Sensitivity	23	17	20
FM Sensitivity	200	300	300

Frequency range	DC-4GHz	DC-8GHz	DC-12.4GHz
Adjustable range	0~75dB,5dB step		
SWR	\leq 1.3	\leq 1.5	\leq 1.6
Insert	\leq 0.5+0.1/GHz		
Loss	\leq 5% \pm 0.1/dB		\leq 5% \pm 0.5/dB

* If you want to know more details for the models and the specifications, please call: +86-755-86021376 or fax your requirements to me the fax number is +86-755-86021347, we will keep providing perfect service to you. And you can visit our website www.attenelectronics.com www.atten.com.cn for other products, thanks!